



E L E

N K

E R

ROLLATOR
WALKER

ROLLATOR
WALKER



USER MANUAL

Parts:



- | | |
|--------------------------|---------------------------------------|
| 1 Backrest | 7 Handbrake |
| 2 Bottle Holder | 8 Knob |
| 3 Seat | 9 Hook and Loop Strap for Brake Cable |
| 4 Storage Bag | 10 Cane Holder |
| 5 12" Rubber Front Wheel | 11 10" Rubber Rear Wheel |
| 6 Handgrip | |

SET-UP INSTRUCTIONS

STEP 1

Unbox the walker on a level floor.



ACCESSORIES LIST



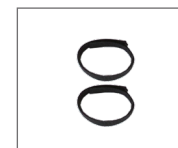
1x Bottle Holder



1x Cane Holer



2x Knobs

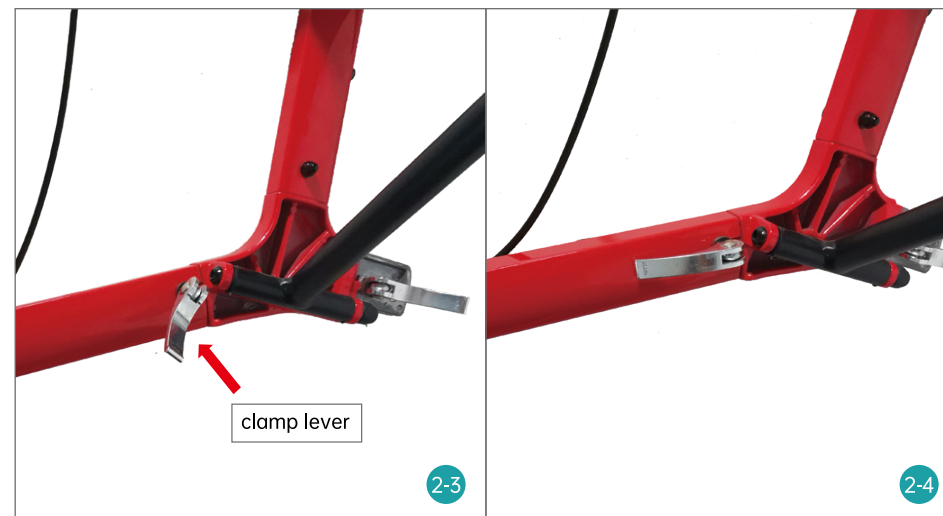


2x Hook and Loop Straps for Brake Cables

STEP 2

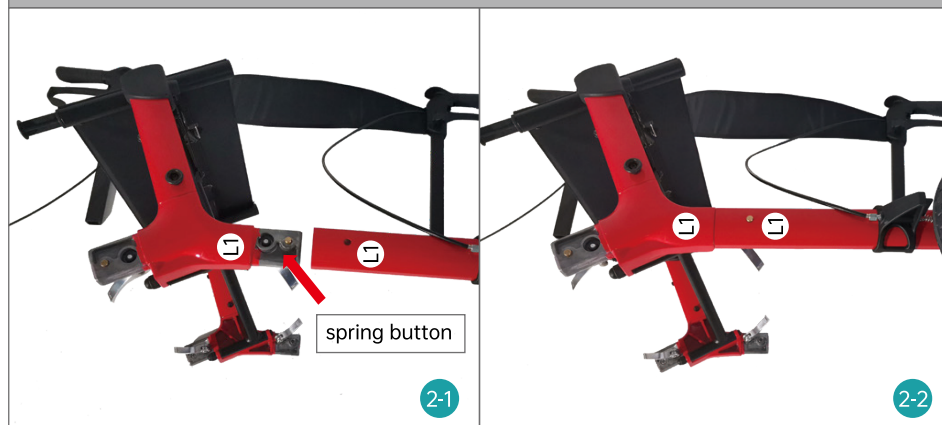
Four Wheels Assembly

Take out the main frame(fig 2).



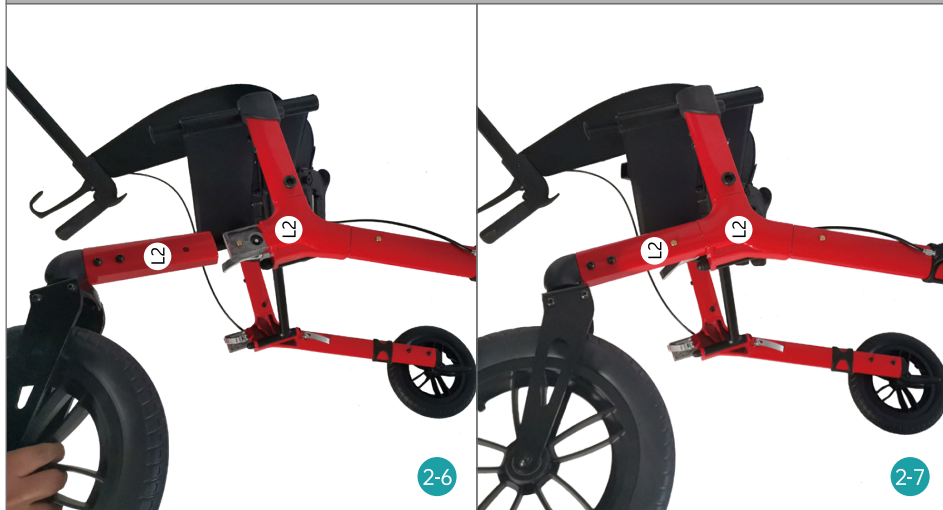
Rear Wheels Assembly

Press the spring button of the wheel tube, then insert the rear wheel tube into the rear main frame tube(fig 2-1)There are labels on tube, L1-L1 R1-R1".Then close the clamp lever to secure the rear leg in place. (fig 2-2 2-3 2-4 2-5)



Front Wheels Assembly

Press the spring button of the wheel tube , then insert the front wheel tube into the front main frame tube(fig 2-6 2-7) There are labels on tube L2-L2 R2-R2 . Then close the clamp lever to secure the front wheel in place.(fig 2-8 2-9 2-10)

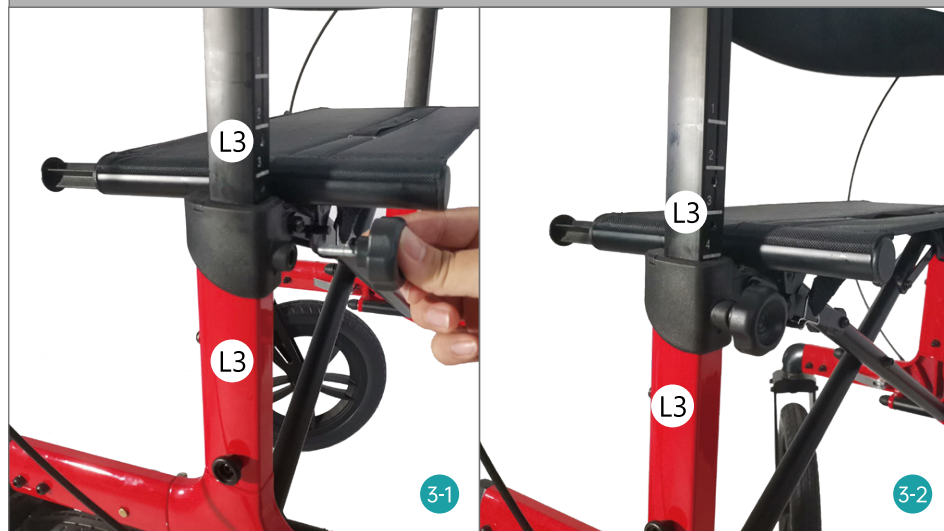


STEP 3 Handle Bar Assembly

Insert the handle bar, raise or lower the handle bar to the desired height.(fig 3)
There are labels on tube, "L3-L3,R3-R3".

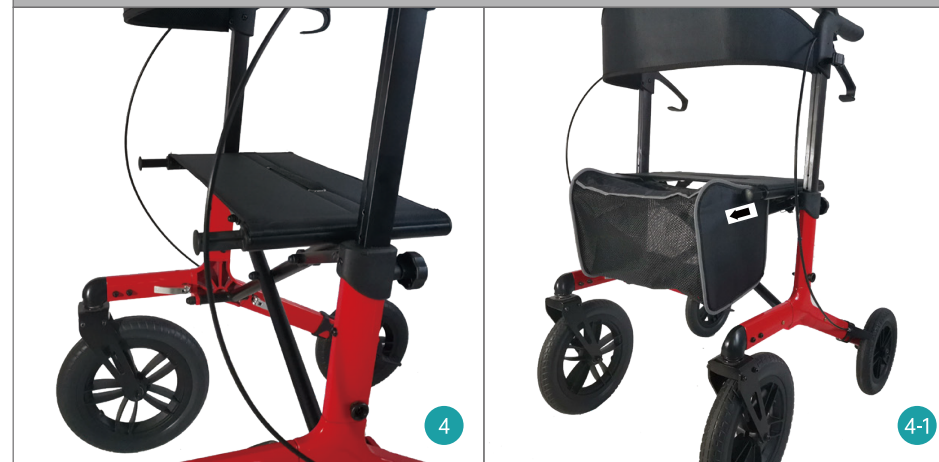


Then insert the knob to secure the handle bar in place.(fig 3-1 3-2 3-3)



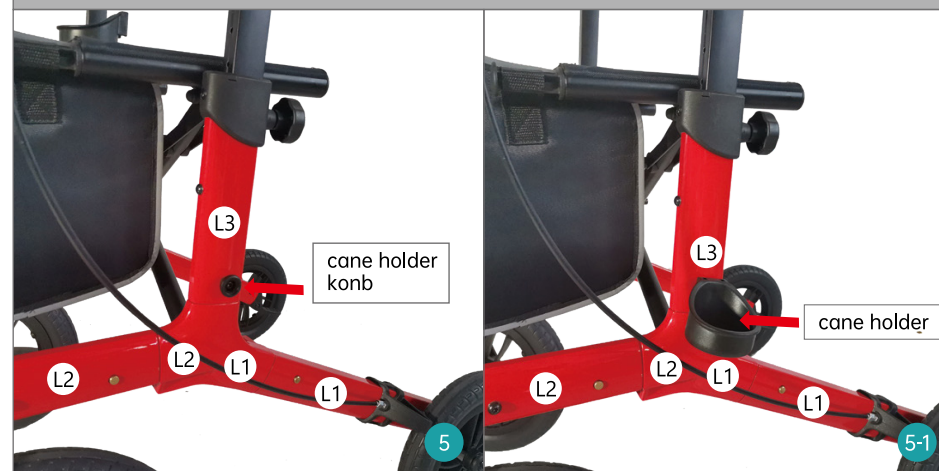
STEP 4 Storage Bag Assembly

Attach the storage bag on the front of seat, please make sure that the arrow mark points to the front.(fig 4 4-1)



STEP 5 Cane/Umbrella Assembly

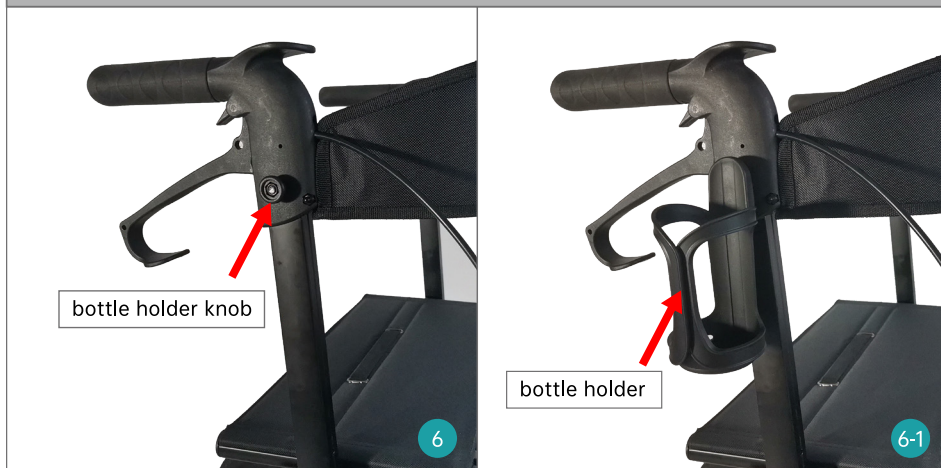
Insert the cane holder into the cane holder knob.(the cane holder knob is on the left tube)(fig 5 5-1)



STEP 6

Bottle Holder Assembly

Insert the bottle holder into the bottle holder knob. (the bottle holder knob is on the right handle bar tube) (fig 6 6-1)



STEP 7

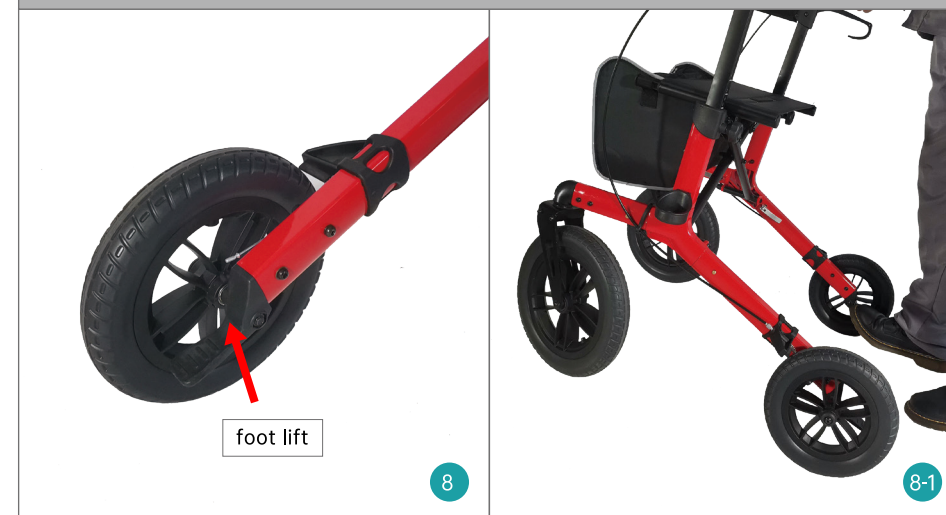
Brake Cable Hook and Loop Strap Assembly

Affix the brake cable to the main frame with hook and loop strap(fig 7).



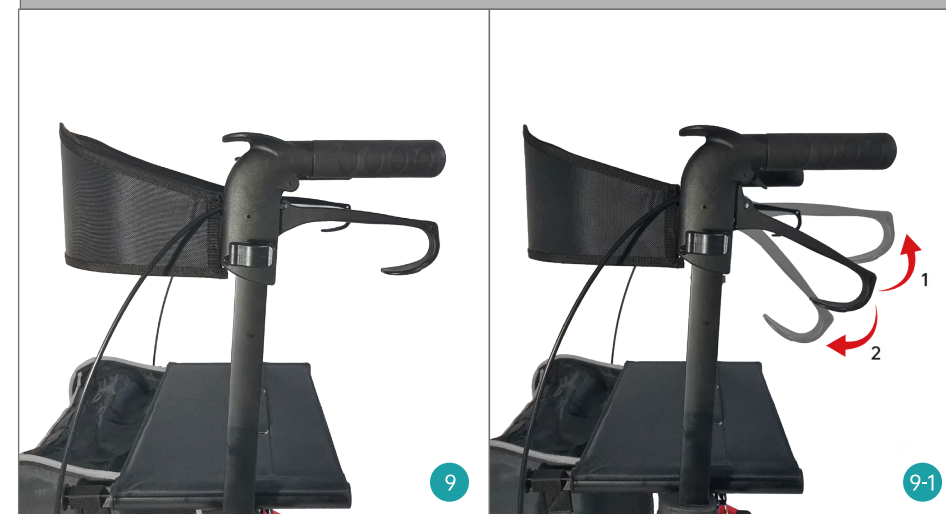
THE FOOT LIFT

Assist you go up the threshold easily, prevent from tipping over.



HANDBRAKES OPERATION

- 1 . Squeeze the brake handles to engage the lock.(flg 9)
- 2 . Push down to lock the rear wheels.(flg 9-1)



ONE-HAND FOLD

Pull up the strap of seat to fold the walker.



10



10-1

HOW TO ADJUST BRAKES

Brake Issue: The brake cannot engage rear wheel when squeezing handbrake (fig A).



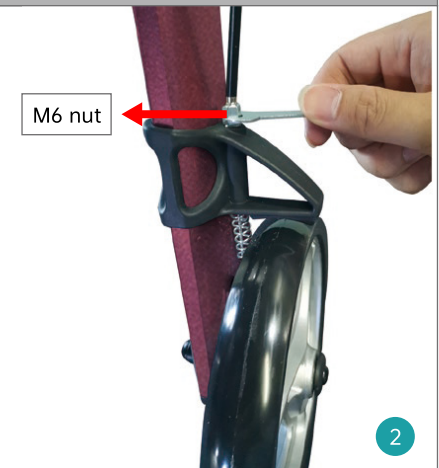
A

Adjust Rear Brake Position

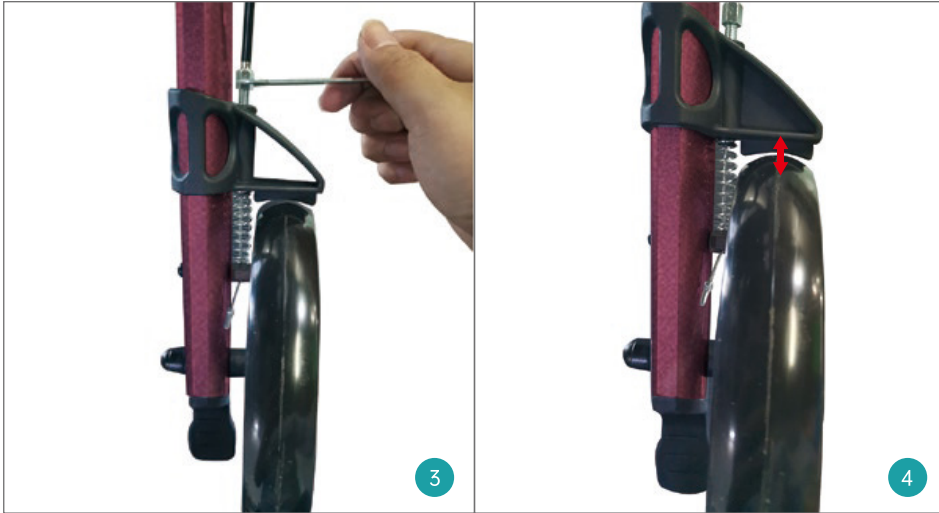
Tools: Plier or 10mm wrench (fig 1).
Use plier(or 10mm wrench) to turn M6 nut counter-clockwise(fig 2-3). And brake will be closer to wheel(fig 4). Then squeeze handbrake, if it doesn't work, repeat the steps until rear brake can engage wheel.



1



2



CONTACT US

For any defects, parts missing, use or repair concerning our products, please contact us first, Our customer service will reply within 24 hours and offer how to use a solution to your issue. Thank you for your support.






1. E-mail: elenkerservice@hotmail.com
2. Amazon Message: Click the Sold by "store name" under the buy box, then "ask a question". (Amazon Buyer)
3. Customer Help Line: 800-513-5727

WARRANTY

- * You may return most new, unopened items sold and fulfilled by Amazon within **30** days of delivery for a full refund.
- * Defects in material accessories and non-durable components such as wheels, brakes, seat, handgrips and under NORMAL use for the **lifetime** warranty of the original consumer purchaser.
- * The warranty does not extend to device failure due to owner misuse or negligence, or normal wear, tear and need periodic replacement.
- * During warranty periods, our warranties cover all parts labor and shipping for repairing this walker.

WARNINGS

To ensure your safety in using ELENKER Rollator Walker, all the following instructions must be followed

-  The maximum load of the walker is 300lbs.
-  DO NOT use walker, if there is apparent damage or if any parts are missing.
-  Ensure that brakes, height adjustment bolts or any other moving parts are in good condition and check all screws and fasteners, and retighten if necessary.
-  DO NOT use on stairs, escalators, moving sidewalks, or go up or down inclines greater than 15% or diagonally across inclines greater than 5%.
-  Be careful to avoid pinching your fingers while raising and lowering the handle bar and opening and closing the rollator walker frame.