



KNEE  
WALKER



E L E

IN K

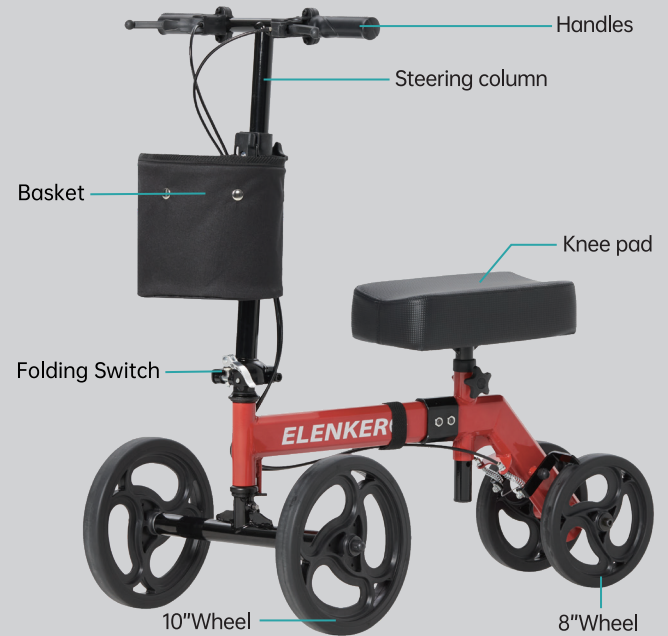
E R

KNEE  
WALKER  
MANUAL

## USER MANUAL OF ELENKER KNEE WALKER



### Parts:



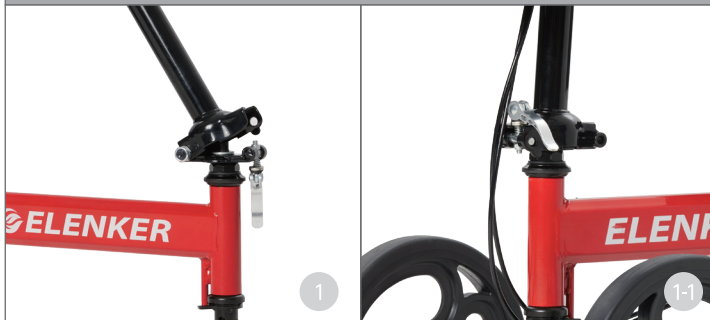
## HOW TO INSTALL THE KNEE WALKER

All product accessories are shown in above figure.



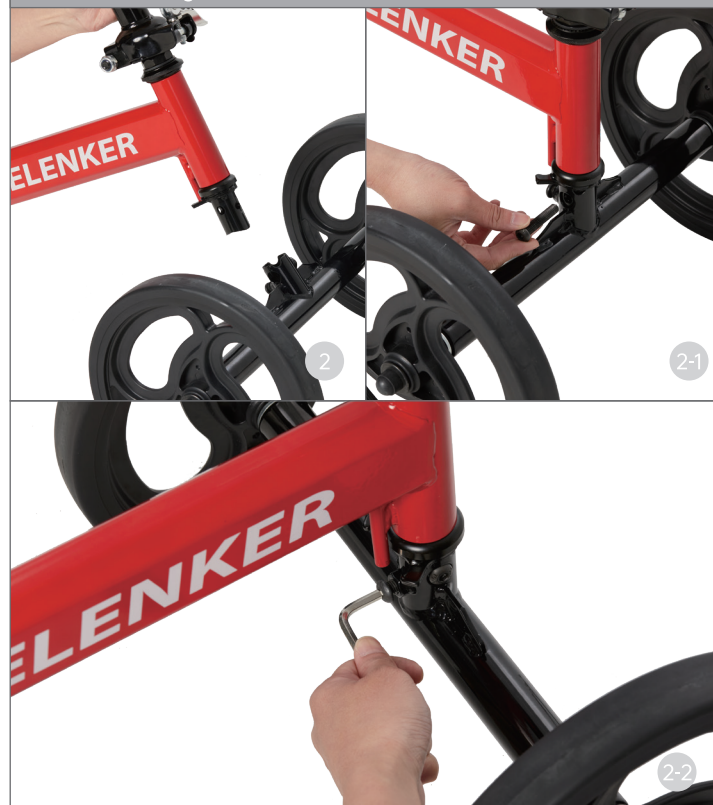
### STEP 1

Raise the steering column and fasten the clamp firmly to secure the steering column as shown in the figure.



### STEP 2

Assemble the front wheels, insert the steering column into the front axle; insert the screw and fasten it with hex wrench and then tighten another retaining screw.



### STEP 3

Connect the knee scooter body properly and insert two screws and tighten the nuts.



### STEP 4

Insert the handle bar into the steering column and tighten the screw.



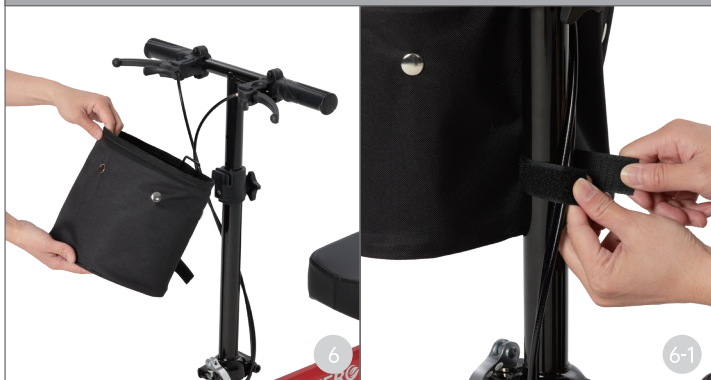
### STEP 5

Install the knee platform post into the receptacle tube and tighten the screw.



## STEP 6

Hang the storage bag into the slot on the steering column and fasten the Velcro.



## STEP 7

The knee scooter is foldable.



## STEP 8

The steering column and knee platform of the knee scooter are height-adjustable.



## How to use the brake lock







Squeeze the brake handle to lock the rear wheels; press the button circled in the figure to release the brake lock.



## WARNINGS

The knee walker can provide assistance to an individual weighing up to 300 lbs.

## Precautions:

-  Do not expose the product to rain.
-  Do not hang anything on either of the handlebars as this may cause the Knee Walker to tip.
-  Keep the product away from children, for they may tip over and injure themselves.
-  Please pay attention to safety while installing, do not put fingers into the spin position and seat cushion card buckled position.
-  Do not use strong corrosive action cleaner onto product surface.
-  The maximum load of the knee walker is 300lbs.

## CONTACT US

For any inquiries or quality-related issues concerning our products, please send an email to [elenkerservice@hotmail.com](mailto:elenkerservice@hotmail.com), or call (800) 401-7769. We will respond to you as soon as possible.